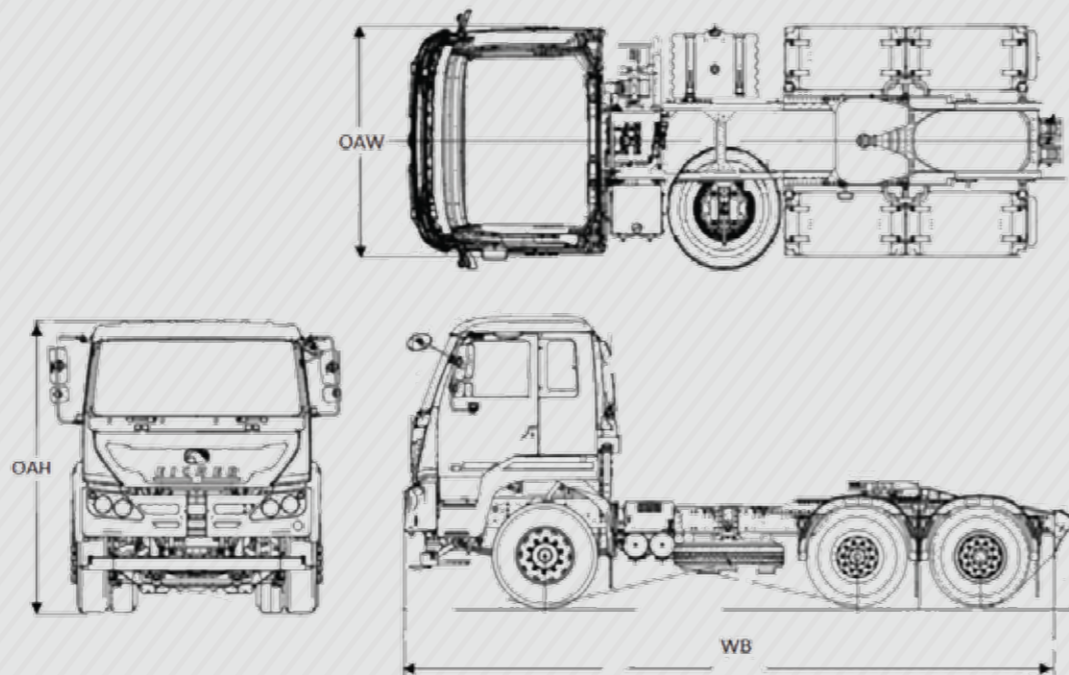


## Model Eicher Pro 6049

|                         |  |
|-------------------------|--|
| GCW (kg)                | 49000  |
| Engine                  | VEDX8  |
| Max. Power              | 280hp @ 2200 rpm   |
| Max. Torque             | 1050Nm @ 1100-1800 rpm   |
| Clutch Diameter         | 430mm (Pull type)  |
| Transmission            | ET140S9  |
| Rear Axle Ratio         | 5.857  |
| Chassis Dimensions (mm) | 285x76x7 Bell Crank / 300x90x8 Bogie   |
| Suspension              | At Front – Parabolic<br>At Rear – Bogie Suspension   |
| Cabin                   | Sleeper cabin  |
| Steering                | Tilt and Telescopic Power Steering   |
| Tyre                    | 11R20  |
| Fuel Tank (Litres)      | 350  |
| DEF Tank (Litres)       | 50   |
| Battery                 | 2X12 V-120 Ah  |
| Gradeability (%)        | 27%  |
| 5th Wheel Coupling      | 50 mm  |
| Wheelbase (mm)          | 4085 mm  |
| Applications            | Cement, Bulker, Tip Trailer (Blue metal & Coal), Tankers, Steel Coil, Market Load, ISO Container, Medium ODC |
| TCD                     | 15.7 m   |
| Min. Ground Clearance   | 227 mm   |
| Body Options            | CBC  |
| Wheel Rim Size          | 8.00 x 20  |
| Electricals             | 24V  |
| Brake                   | Dual Circuit, Full Air S-Cam with Exhaust brake (Engine mounted)   |



| Vehicle Model | WB   | FOH  | ROH  | OAL  | AOA | ROA | AOD |
|---------------|------|------|------|------|-----|-----|-----|
| Pro 6049TT    | 4085 | 1420 | 1510 | 7015 | 21* | 27* | 45* |

**VE COMMERCIAL VEHICLES**  
A VOLVO GROUP AND EICHER MOTORS JOINT VENTURE  
eichertrucksandbuses.com, Eicher Care: 1800 102 3531

VE COMMERCIAL VEHICLES LTD.  
Registered Address – 3<sup>rd</sup> Floor Select Citywalk,  
A-3 District Centre, Saket, New Delhi 110017, India.  
CIN – U74900DL2008PLC175032

CORPORATE ADDRESS  
Eicher Trucks & Buses  
#96, Sector – 32, Gurgaon  
122001, Haryana, India.

Caution: \*Do not weld or drill on chassis frame. \*Accessories, colours and features shown in pictures or elsewhere may not constitute standard fitment. \*Weight mentioned is for standard configuration with standard body sizes and will change due to optional fitments. \*As a result of continuous research and innovation carried out, specifications are merely indicative and are subject to change without notice.

TRUCKS AND BUSES



# PROFITABLE FOR LIFE.

## Eicher Pro 6049

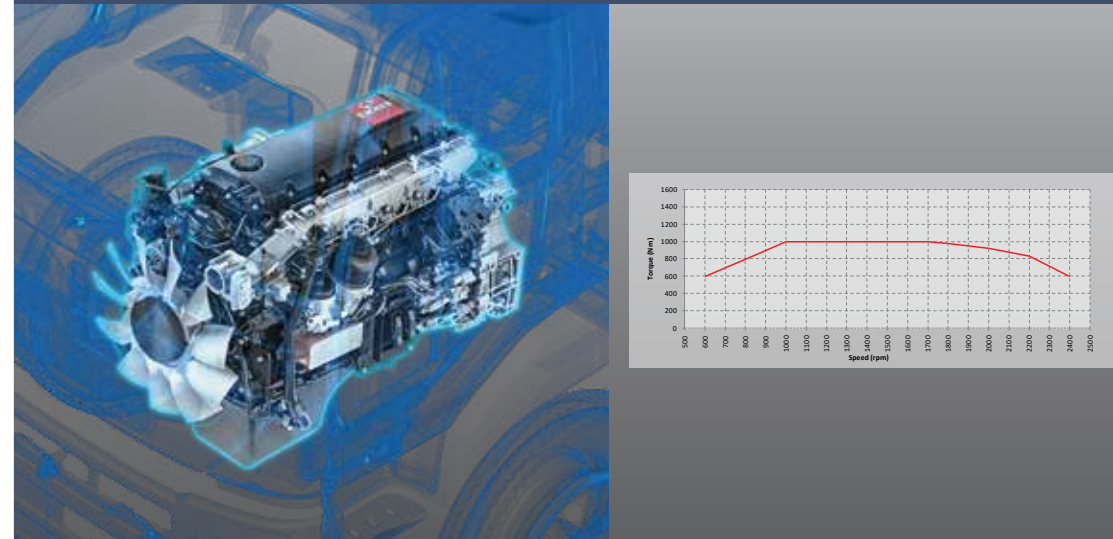
The 49 tonne GCW Tractor



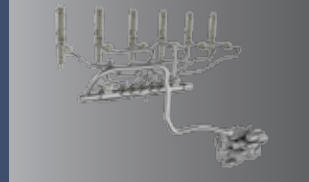


## More Km per Litre.

The new Eicher Pro 6049 is designed to deliver best-in-class fuel efficiency thereby reducing the overall operational costs and increasing profitability. The proven **VEDX8** engine clubbed with Volvo Group's EMS, delivers **high peak torque over a wide range of rpm**, thereby resulting in more trips with lesser fuel consumption.



FIE System



Volvo Group's EMS



ESS Compressor



- » Proven VEDX8 CRS Engine-280 hp @ 2200 rpm
- » Flat torque delivery of 1050 Nm over a wide rpm range (1000-1700)
- » **MBooster+** to optimize acceleration and maximize fuel efficiency
- » First-in-industry **Fuel Coaching** provides real-time guidance for improved driver efficiency and fuel economics
- » Energy saving components like Viscotronic fan & ESS compressor

## More Trips. Extra Miles.

Robust, rigorously tested and optimized driveline delivers more power and higher torque which enables **higher productivity**. Quick gear shifts and minimal rpm and torque disruptions enable better pick up. High torque-to-weight ratio ensures **outstanding gradeability**. All this together leads to **faster turnaround** and more trips.

- » High power-to-weight ratio for increased load pulling ability
- » Modular DOMEX chassis for high tensile strength
- » Parabolic suspension with anti-roll bar at front for better vehicle stability at sharp turns
- » Ergonomically designed cabin for increased driver productivity

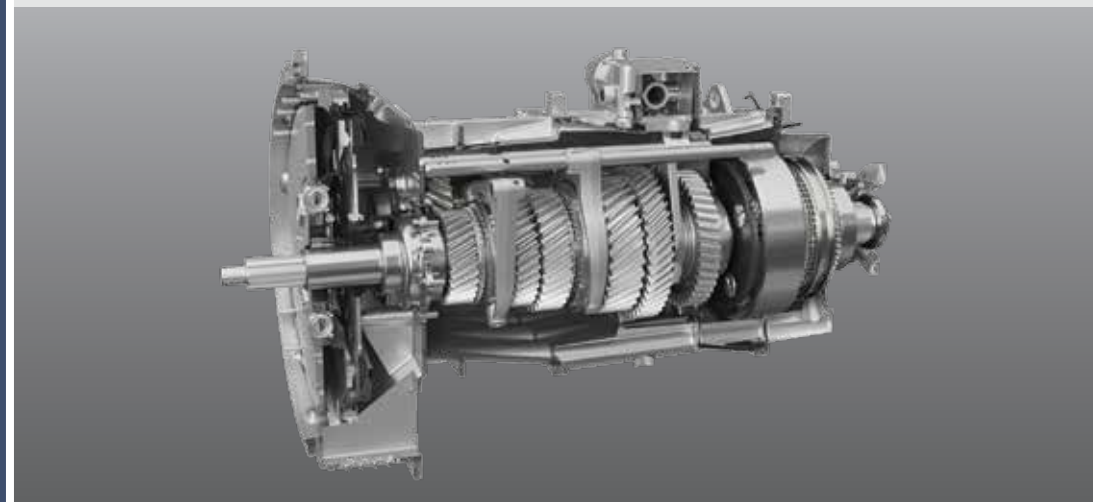
Parabolic Suspension



Cruise Control

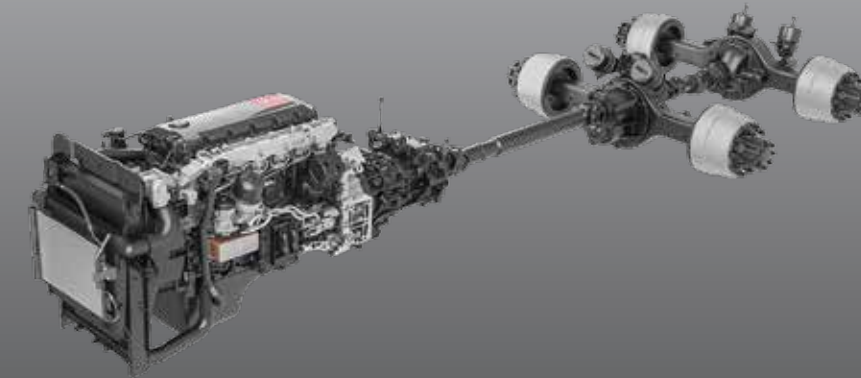


MBooster+



## Superior Uptime.

Higher strength and lower weight composite material derive **maximum component life** ensuring truck is on road and available to haul always. With the **fully equipped Eicher Service Network**, preventive maintenance of the truck is ensured, thus delivering superior uptime.



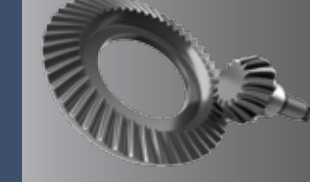
On-board Diagnostics



Clutch Wear Indicator



Bigger Crown Wheel



- » Advanced on-board diagnostics system that displays fault indicators in the form of visual signals, messages and alarms
- » Engine protection system ensuring 4-way protection
- » Exhaust brake to prevent engine over-running
- » Longer and synchronized service intervals

## More Comfort. Longer Drives.

Pro 6049 cabin has been designed keeping in mind the long and tiring journeys, the drivers have to undertake. The **global cabin** provides a **comfortable workspace** that ensures they are not only comfortable, but also safe while on their long runs.

- » HVAC optional sleeper cabin for better comfort.
- » Meeting cabin crash test norms
- » Intelligent Driver Information System (IDIS) that provides truck operational parameters.
- » Tilt & telescopic power steering and 6-way adjustable driver seat for better driving posture.
- » Cruise Control for fatigue-free driving experience.

HVAC



6-way Adjustable Driver Seat



Tilt and Telescopic Power Steering

