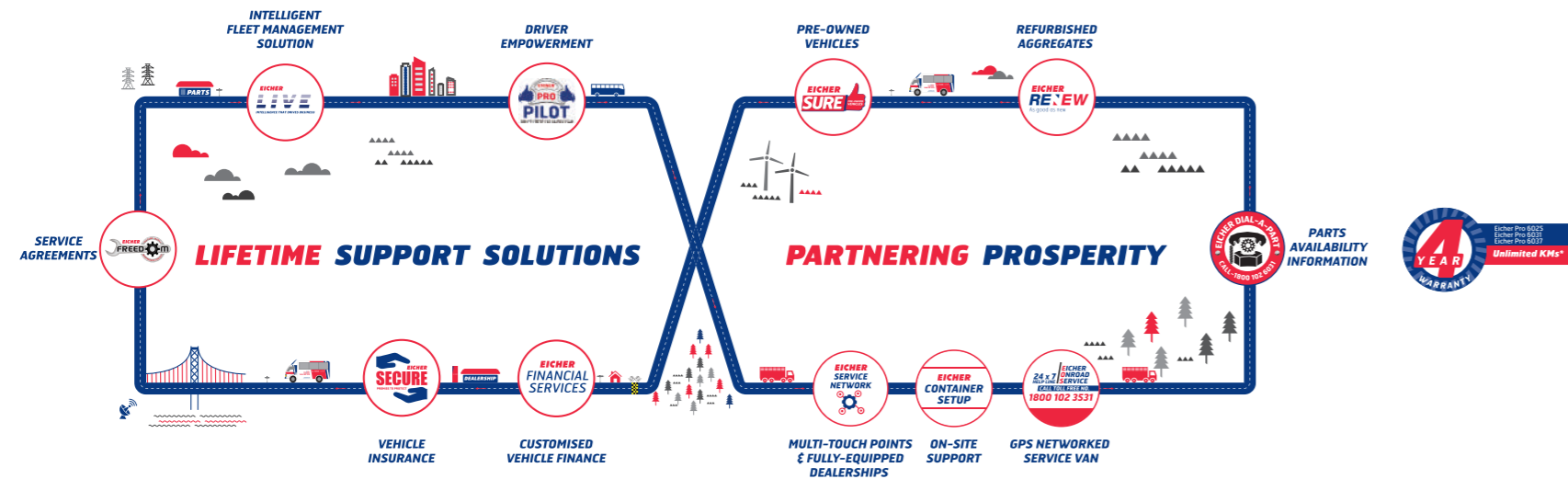


Eicher Pro 6037 BSIV

SPECIFICATIONS

Model	Eicher Pro 6037
GVW	37000 Kgs.
Engine	VEDX5, BSIV Engine with SCR technology
Maximum Power Output	210 HP @ 2200 rpm
Maximum Torque Output	825 Nm @ 1200-1600 rpm
Gear Box	ZF 9S1110
Clutch Type	Hydraulically actuated pull type with clutch booster
Front Axle	Twin steer axle - reverse elliot, 'I' beam
Lift Axle	Pusher type
Rear Axle	Heavy duty fully floating

Chassis	Joggled frame with 285 x 76 x 7mm	
Suspension	Front: Semi elliptical laminated leaf springs with hydraulic type double acting shock absorbers Rear: Semi elliptical laminated leaf springs with Bell Crank Mechanism	
Steering	Tilt and telescopic hydraulic power steering	
Fuel tank	350 Ltrs.	
Electricals	24 V	
Tyre	11R22.5 Tubeless radials	
Variants Available :		
Wheel Base	6600mm	6600mm
CWC/CBC	28ft	30ft
FSD/HSD	28ft	NA



*Whichever is earlier. Enhanced Warranty on Engine, Transmission & Rear Axle only. T&C Apply
 CAUTION: Do not weld or drill on chassis frame. Accessories, colour & features as shown in the picture or elsewhere may not constitute to standard fitment. As a result of continuous research & innovations carried out, specifications are merely indicative & are subject to change without notice.
 Weight mentioned is for standard configuration with standard body size & will change due to optional fitments.

EICHER TRUCKS AND BUSES
 VE Commercial Vehicles Ltd.
 # 96, Institutional Area,
 3rd Floor, Sector 32
 Gurgaon-122001, Haryana.

VE COMMERCIAL VEHICLES
 A VOLVO GROUP AND EICHER MOTORS JOINT VENTURE

www.eicher.in/etb | [f](#) [y](#) [in](#) /Eicher Trucks and Buses | [t](#) @ETBIndia

Registered Office
 CIN: U74900DL2008PLC175032
 3rd Floor Select Citywalk,
 A-3 District Centre, Saket,
 New Delhi - 110017, India;
 Email - info@vecv.in

Authorized Dealer

Eicher Pro 6037
 The 37 ton GVW truck

TRUCKS AND BUSES

**MAXIMUM LIFETIME
 PROFITABILITY**



Eicher Pro 6037

Best in class fuel efficiency, faster turnaround and comfortable drive leads to higher Vehicle Lifetime Profitability!

Eicher Pro 6037 is the new generation 37 ton GVW truck, all set to redefine the trucking experience with its unmatched overall performance. Equipped with highly fuel efficient 4 cylinder 4 valve engine built on a global platform and a new generation cabin with host of safety and comfort features, Eicher Pro 6037 ensures higher productivity hence leading to higher profitability for its owner.

- Best in class fuel efficiency
- Faster turnaround time, quick pick up and acceleration
- Unmatched cabin comfort with state of the art features
- Superior uptime
- High reliability and durability
- Optimized maintenance cost



VEDX5 ENGINE - Based on Volvo group's global platform



Next generation 4 cylinder 4 valve CRS engine

EMS 3.0 – Volvo Group's Engine Management System

Max. Power output – 210HP@2200rpm

Max. Torque output – 825Nm@1200-1600rpm

Next gen 4 cylinder engine with high combustion efficiency and low parasitic losses clubbed with Selective Catalytic Reduction (SCR). SCR is an advanced active emission control technology system

- Which is proven technology worldwide
- Gives improved fuel efficiency
- Delivers better engine life
- No major modifications required on engine level

Longer oil drain intervals

NEXT GENERATION CABIN



Fully suspended cabin with hydraulic tilt mechanism
CED paint for improved corrosion resistance and enhanced gloss
Dual panel cabin for high strength and safety



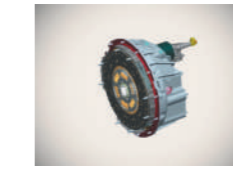
Curved dashboard with convenient position of instruments and controls providing best possible view and operation

AD-BLUE TANK

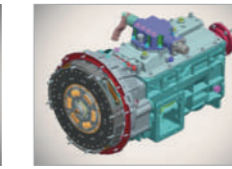


Urea section from the tank to UDS takes place through pick up filter by vibrating diaphragm pump. Urea is then pressurized to injection line & pushed towards nozzle.

Unmatched driveline



430 mm clutch dia. with clutch booster



ZF 9S1110-9 speed gear box



Lubricated for life propeller shaft



458 mm dia. crown with heavy duty axles

Modern aesthetics



Aerodynamic cabin with new and modern styling



Bigger and stylish integrated headlamps with more light intensity



Instrument cluster with LCD display



Bigger and stylish room lamp

Enhanced convenience and comfort



Tilt & telescopic steering



Ergonomically designed gear lever position



Wider door opening



6 way adjustable driver seat



Tubeless radials

Stronger aggregates



Wider joggled frame Domex chassis with high tensile strength



eAPU (Electronically Controlled Air Processing Unit)



Pusher Lift Axle

GO PRO

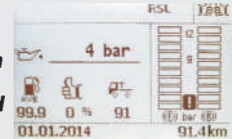
The Eicher Pro Series is a range of next generation trucks and buses from 4.9 to 49 tons, designed to take the industry to a new **PRO**fessional level. It brings together the Volvo Group's world class technology and processes and the frugal engineering and local expertise of Eicher. In keeping with the 'Go **PRO**' philosophy, the Eicher **PRO** Series **PRO**promises to deliver higher **PRO**fitability and more **PRO**sperity to its customers through best in class fuel efficiency, superior uptime and better overall vehicle performance.

Next generation features

Fuel coaching system for real time guidance to driver for economical driving practices



Intelligent driver information system giving information on operational data, fuel consumption and on board diagnostics



Cruise control for comfortable longer drives



Introducing real time fleet management with Eicher Live

EICHER
LIVE
INTELLIGENCE THAT DRIVES BUSINESS