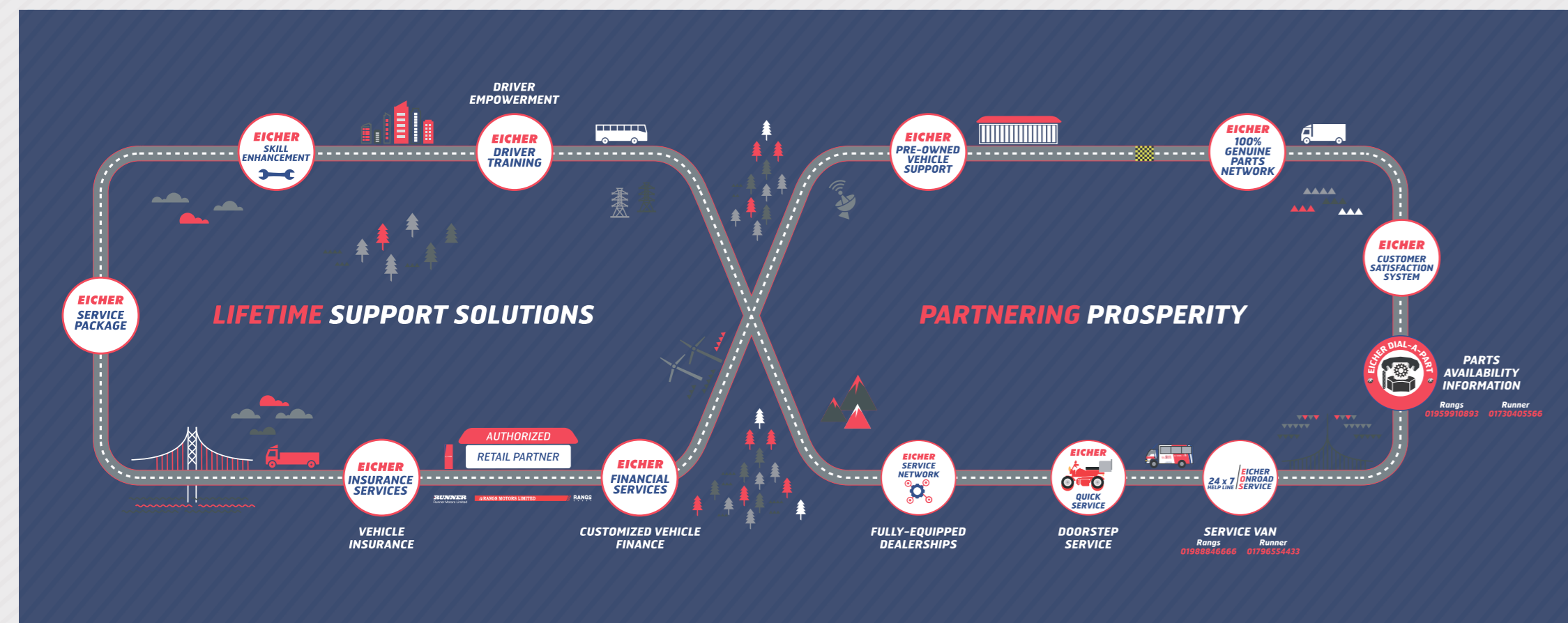


## Lifetime Support Solutions.

Through our Lifetime Support Solutions, we ensure a seamless and hassle-free experience from the time you consider buying an Eicher vehicle to the time you think of selling. Our continuously improving and holistic services will ensure higher uptime and productivity for your BSIII vehicles.



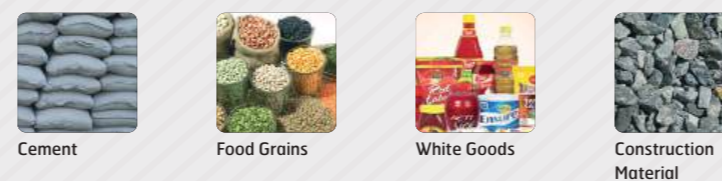
Dealers	EOS Van	Dial-a-Part
Runner	01796554433	01730405566



### Model Eicher Pro 6031 (8x2)

GVW (kg)	31000
Engine	VDEX 5
Max. Power	210 HP @ 2200 RPM
Max. Torque	825Nm @ 1200-1600 RPM
Clutch (mm)	395 Dia. Booster Assisted
Gearbox	ET90S6 (6 forward & 1 reverse)
Front Axle	ETB Forged I Beam
Rear Axle	Fully floating Banjo
Chassis Dimensions (mm)	285x76x7
Service Brake	Dual Circuit, Full Air S-cam with exhaust break
Parking Brake	Full Air Hand Operated on Rear Wheels
Front Suspension	Semi-elliptical laminated leaf springs with Hydraulic type double acting telescoping shock absorber
Rear Suspension	Semi-elliptical laminated leaf springs without ARB
Cabin	Sleeper Cabin
Steering	Power assisted
Tyres	10R20-16PR
Fuel Tank (Litres)	380
Battery	24V 150 Ah
Wheelbase (mm)	6150
Turning Circle Diameter (m)	22.1
Gradeability (%)	20

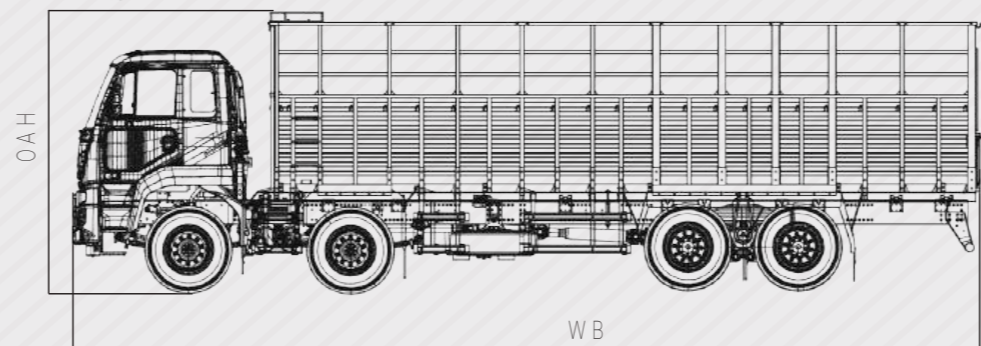
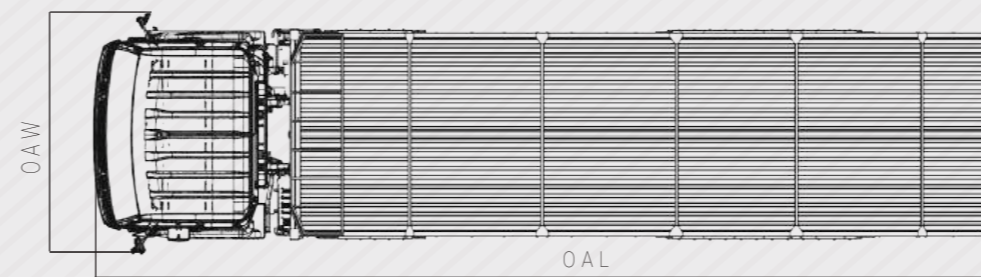
#### Applications:



Caution: \*Do not weld or drill on chassis frame. \*Accessories, colours and features shown in pictures or elsewhere may not constitute standard fitment. \*Weight mentioned is for standard configuration with standard body sizes and will change due to optional fitments. \*As a result of continuous research and innovation carried out, specifications are merely indicative and are subject to change without notice.

**EICHER TRUCKS AND BUSES**  
VE Commercial Vehicles Ltd.  
#96, Institutional Area,  
3<sup>rd</sup> Floor, Sector 32  
Gurgaon-122001, Haryana

**VE COMMERCIAL VEHICLES**  
A VOLVO GROUP AND EICHER MOTORS JOINT VENTURE



Vehicle Model	Wheelbase (mm)	Overall Length (OAL) mm	Overall Width (OAW) mm	Overall Height (OAH) mm
Pro 6031H	6150/ 6150 6600/ 6600	9726/ 10336 10945/ 11992	2480/ 2480 2480/ 2480	

TRUCKS AND BUSES



# DO MORE

## Eicher Pro 6031

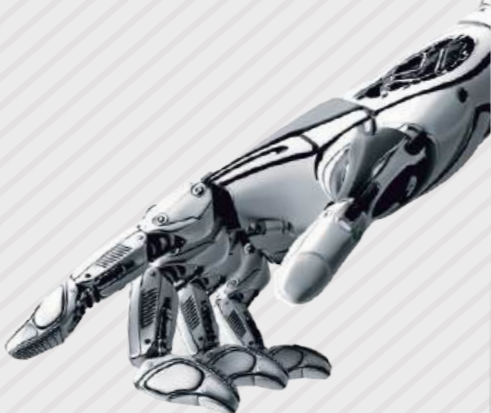
The 31 Tonne GVW Truck



**VE COMMERCIAL VEHICLES**  
A VOLVO GROUP AND EICHER MOTORS JOINT VENTURE

Visit us at: [www.eichertrucksandbuses.com](http://www.eichertrucksandbuses.com)

**PARTNERSHIP WITH THE VOLVO GROUP**



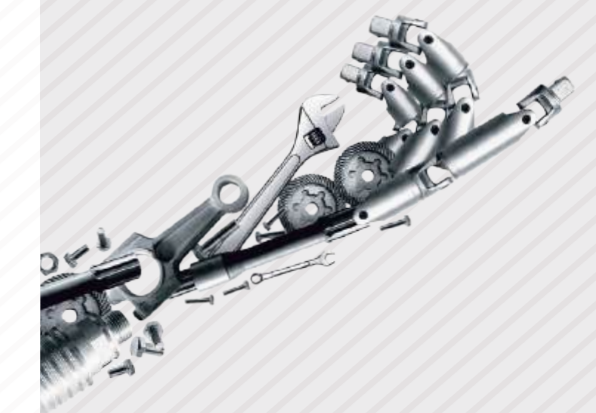
Two leading players in the commercial vehicle business joined hands in 2008 with a convergent vision of driving modernization in commercial transportation. Volvo Group, the world's leading manufacturer of trucks, buses, construction equipment and marine & industrial engines, brought its global expertise and world-class technology, while Eicher Motors brought its frugal engineering and deep knowledge of the developing markets. The mission of this joint venture- VE Commercial Vehicles Ltd., is raising the standard of the commercial transportation industry and taking it to a new professional level.



Leader in commercial transportation  
Frugal engineering and operation  
Aftersales infrastructure  
Cost-effective operations



Global expertise  
Leadership in product technology  
Well-defined processes and controls brand image



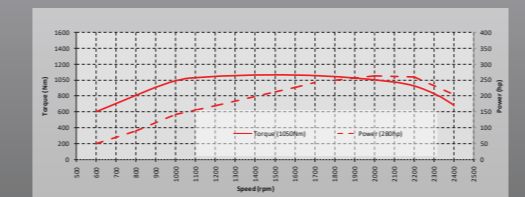
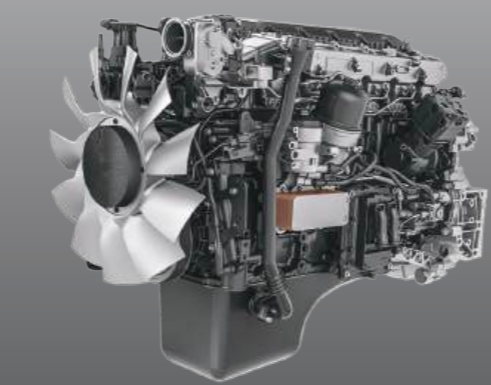
The new Eicher Pro 6031H is the next-generation 31 tonne GVW Haulage, targeting applications like Fruits & Vegetable, Poultry, Food Grains, Garments, FMCG, etc. With high power of 210 hp and torque output of 825 Nm, Pro 6031H is built on the philosophy to DO MORE and deliver superior performance, reliability, higher productivity and greater revenue.



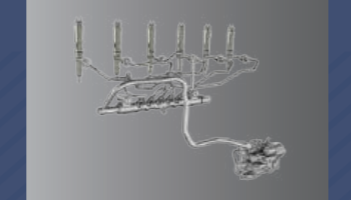
**More Tonnes. Per Litre.**

The new Eicher Pro 6031H is built to deliver best-in-class fuel efficiency thereby reducing the operational costs.

The proven **VDEX 5** engine clubbed with Volvo Group's EMS, delivers **high peak torque over a wide range of rpm**, ensuring that Pro 6031H makes the most out of every drop of fuel.



FIE System



Volvo Group's EMS



ESS Compressor



- » Next-gen VDEX 5 common rail engine
- » Optimum engine design with wider flat torque curve 1200-1600 rpm
- » Higher power of 210 hp @ lower 2200 rpm
- » Aerodynamic cabin to reduce air drag
- » First-in-industry Fuel Coaching for improved driver performance

**More Trips. Faster Turnaround.**

Pro 6031H is made with a robust and optimized driveline which is tuned to deliver higher Fuel Efficiency and capacity to carry higher loads in the toughest of terrains. Higher power-to-weight ratio provides higher pulling power and superior gradeability leading to faster turnaround and more trips.

- » High peak torque of 825 Nm
- » High gradeability - 20% and Low TCD - 22.1 M
- » High torque at wheels with 5.286 FDR
- » Higher power-to-weight ratio
- » Heavy-duty fully semi-elliptical laminated leaf springs without ARB suspension
- » Inter-axle differential lock
- » Ergonomically designed cabin for driver productivity

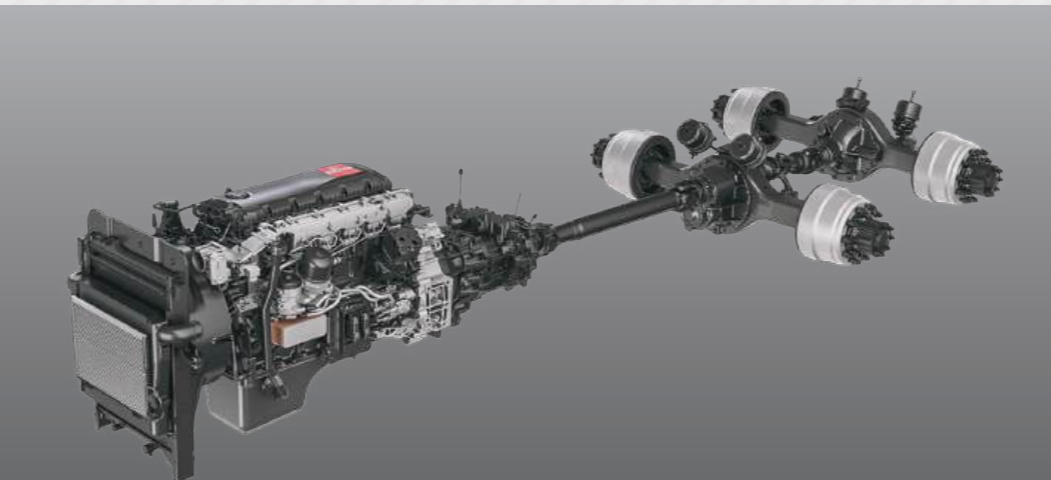
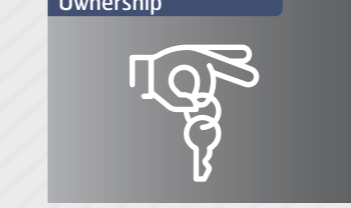
Semi-elliptical Suspension



Bell Crank



Better Total Cost of Ownership



**Superior Uptime.**

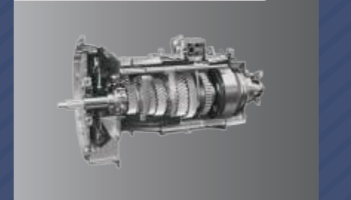
For long haul, Uptime is essential and Pro 6031H is designed to ensure optimum utilization of all your assets. Along with the fully equipped service network, Pro 6031H delivers superior uptime ensuring that the operations never stop.



Clutch Wear Indicator



ET90S6 Gearbox



Bigger Crown Wheel



- » Reliable VEDX5 engine with longer L10 Life
- » Reliable and robust aggregates for higher uptime
- » High-strength DOMEX chassis
- » Engine Protection System
- » On-board diagnostics
- » Designed for easy maintenance

**More Comfort. Enhanced Safety.**

Pro 6031H cabin has been designed keeping in mind the harsh conditions the drivers have to operate in. The global cabin provides a comfortable workspace that ensures the drivers are not only comfortable, but alert for longer hours.

- » HVAC (optional) for better comfort
- » Semi-elliptical laminated leaf springs with Hydraulic type double acting telescoping shock Absorber at front
- » Tilt and telescopic power steering
- » 6-way adjustable driver seat
- » Intelligent Driver Information System (IDIS) & Cruise Control
- » All-round mirrors and engine brake for enhanced safety

IDIS



Mechanically Suspended Driver Seat



Tilt and Telescopic Power Steering

