

**MAXIMUM
LIFETIME
PROFITABILITY**

Eicher Pro 6025T

The 25 ton GVW Tipper
Powered by VEDX8 Engine

TRUCKS



GO PRO

Eicher Pro 6025T

Best in class performance, faster turnaround, lower maintenance and comfortable longer drive leads to higher Vehicle Lifetime Profitability.

Eicher Pro 6025T is the Next Gen 25 ton GVW tipper all set to redefine the trucking experience with its unmatched overall performance. Equipped with the highly fuel efficient VEDX8, 6 cylinders, 7.7 litre CRS engine - designed in association with Volvo Group and a Next Gen cabin with state-of-the-art features, the Eicher Pro 6025T creates a benchmark for performances, reliability and higher productivity and hence leads to higher profitability for its owner.



Superior uptime



Faster turnaround time, quick pick up and acceleration



Optimized maintenance cost



High fuel efficiency



High reliability and durability



Best in class torque at wheels



Unmatched cabin comfort & safety with state of the art features



VEDX8 ENGINE - DESIGNED IN ASSOCIATION WITH VOLVO GROUP



Next gen 6 cylinder, 4 valve, 7.7 litre CRS engine

EMS 3.0 – Volvo Group's 3rd Generation Engine Management System

Max power output- 220 HP @ 2200 rpm

Max torque output – 850 Nm @ 1100-1700 rpm

- Next gen 6 cylinder engine with high combustion efficiency and low parasitic losses leading to higher fuel efficiency
- Advanced fuel injection technology
- EPS (Engine Protection System)- Protection against overheating at low oil pressure and high coolant temperature increases durability of the engine
- Longer oil drain intervals

GO PRO

The Eicher Pro Series is a range of next generation trucks and buses from 5 to 49 tons, designed to take the industry to a new **PRO**fessional level. It brings together the Volvo Group's world class technology and processes and the frugal engineering and local expertise of Eicher. In keeping with the 'GO **PRO**' philosophy, the Eicher **PRO** Series **PRO**promises to deliver higher **PRO**fitability and more **PRO**sperity to its customers. This it fulfills, through best in class fuel efficiency, superior uptime and better overall vehicle performance.

NEXT GEN CABIN



Fully suspended cabin with hydraulic tilt mechanism

CED paint for improved corrosion resistance and enhanced gloss

Dual panel cabin for high strength and safety



Curved dashboard with convenient position of instruments and controls providing best possible view and operation

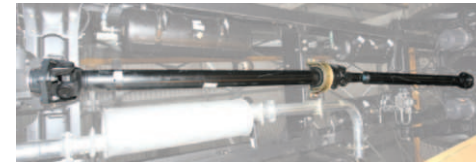
Unmatched driveline



430 mm dia. clutch with clutch booster



ZF 1110TD, 9S Gear Box



Lubricated for life propeller shaft



432 mm dia. crown with heavy duty meritor axle

Modern aesthetics



Aerodynamic cabin with new and modern styling



Bigger and stylish integrated head lamps with more light intensity



Instrument cluster with LCD display



Bigger and stylish room lamp

Enhanced convenience and comfort



Tilt & telescopic steering



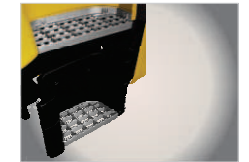
Ergonomically designed gear lever position



Wider door opening



6 way adjustable driver seat



Twin aluminum anti-skid footsteps

Stronger aggregates



Wider joggled frame Domex chassis with high tensile strength



Front suspension with ARB (Anti Roll Bar)



Air processing and distribution assembly for longer life and effective braking



Tool box with lock provision



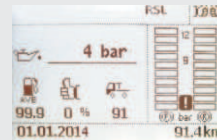
Rear bogie suspension with 11 leaves



Radiator Guard

Next Gen Features

IDIS- Intelligent driver information system giving information on operational data, fuel consumption and on board diagnostics



Fuel coaching system for real time guidance to driver for economical driving practices



Driving ok !!

Cruise control for comfortable longer drives



Eicher Pro 6025T

GO PRO

SPECIFICATIONS

Model	Eicher Pro 6025T
Engine	VEDX8 BSIII 7.7 litres
Max. Engine output	220 HP @ 2200 rpm
Max. Torque	850 Nm @ 1100-1700 rpm
Clutch Size & type	430mm, Booster assisted pull type
Gearbox	ZF 1110TD, 9 Forward, 1 Reverse
Rear Axle	Meritor Tandem-Fully Floating Banjo
Final Drive Ratio (Rear Axle Ratio)	5.29
Crown Size	432mm
Steering	Tilt and Telescopic hydraulic power steering
Chassis Type	Domex 650 Ladder Type Joggle Frame, 285x76x7 mm with 6 mm stiffener
Number of Cross Members	Seven
Front Suspension	Semi-elliptical with anti roll bar, 9 leaves, 7 nos. 13 mm and 2 nos. 16 mm thickness
Shock Absorbers	Hydraulic Double Acting Telescopic Type at Front Only
Rear Suspension	Bogie Suspension, 11 Leaves 27 mm thickness
Brakes	Service Brake : Dual circuit full air Parking Brake : Pneumatic hand operated
Tyres	10x20 (11x20 Optional), Cross Ply
Fuel Tank Capacity	220 litres, Rectangular Polymer tank
Dimensions Wheelbase	4000 mm
Front Wheel Track	2085 mm
Rear Wheel Track	1926 mm
Min. Ground Clearance	285 mm
Width	2590 mm
Body Size (Cum)	16 Box, 14 Box & Rock
Tipping Kit	Hyva, FE - 129 - 3 - 3640
Electricals	2 x 24V (150 Ah)
Max. Speed	79.6 kmph
Turning Circle Diameter	14.4 m
Gradeability	42.5% (crawler gear)



EICHER SERVICE AVAILABLE ANYWHERE, ANYTIME

Eicher has an extensive service reach and no matter where you are, Eicher service is never too far away. Eicher has wide and expanding authorized contact points across the country with professionally trained dealership service team ensuring your vehicle is in safe hands. What's more, Eicher genuine spares made to the specifications are economical and widely available across service centers and spares outlets across the country.



Sale query

01730 406484



Easy spare parts
availability

01730 405566



Eicher mobile
service van

01796 554433

VE COMMERCIAL VEHICLES
A VOLVO GROUP AND EICHER MOTORS JOINT VENTURE

(A Volvo Group and Eicher Motors joint venture)

96, Sector 32, Gurgaon 122001, India.
Phone: +91 124-4415600 Fax: +91 124-4415997
www.eicher.in/etb

Authorized Distributor:

RUNNER
motors limited

138/1, Tejgaon I/A, Dhaka-1208, Bangladesh
E mail: runnerlmd@gmail.com
Web: www.runnerbd.com/motors