

INTRODUCING

EICHER
Pro X

Xpert Hai Toh Possible Hai



Small Trucks

EICHER'S ELECTRIC FIRST SCV, CO-CREATED WITH CUSTOMERS.

Transforming last-mile logistics by blending Eicher's Nayi Soch with our customers' expertise to co-create innovative solutions that make the impossible possible.



Xpert Hai Toh Possible Hai...

INTRODUCING EICHER

Pro X SERIES



Longest Range
in segment **(249 kms)***



Available in
2995/3490 kg GVW



Highest Cargo Volume
for maximum profits
(Up to 395 CFT)



Best-in-Class Payload
(Up to 1760 kg)



Longest Service Interval
for higher Uptime
(30,000 kms)



Industry 1st
Digital Solutions



24x7 Uptime
Support



Safe &
Spacious Cabin



*T&C apply. As per standard ARAI Test Conditions.

ELECTRIC FIRST



Longest Range
in segment **(249 kms)***



Available in **32 kWh / 40 kWh**
battery packs



Charging Time
55 mins (DC Charger)*



Regenerative
Braking



Battery Warranty of
5 years / 1,50,000 kms*



Driving
Modes - Automatic

*T&C apply. As per standard ARAI Test Conditions.

*T&C apply. For SoC 15% to 80%. Charging duration varies depending on different factors.
Warranty coverage applies to either a specified number of years or kilometers, whichever comes earlier.

NAVIGATE EVERY TURN EFFORTLESSLY



Vehicle Warranty of
3 years / 1,50,000 kms*



Best-in-Class
Turning Radius (**5.4 m**)



Best-in-Class Ground
Clearance (**220 mm**)



High Gradeability (**33%**)



Hill Hold Assist



Anti Roll Bar for Higher
Safety during turns

*T&C apply. Warranty coverage applies to either a specified number of years or kilometers, whichever comes earlier.

**MAXIMUM TRIPS,
MAXIMUM EARNINGS.**



Best-in-Class Payload
(Up to 1760 kg)



Best-in-Class Cargo
Volume (Up to 395 CFT)



Available in **2909/3340 mm**
(L10 & L11) Deck Length

DESIGNED FOR SAFETY, BUILT FOR COMFORT.



Walkthrough Cabin
with D+2 seating



Flat Connected
Seats for resting



Electric Power Steering



Air Conditioning
(Optional)



Double Metallic
Panels in fascia & bumper
for extra protection



Complying with European
(ECR29-02) & Indian (AIS29-02)
Crash Test Standards

FACTORY FITTED CARGO BODY

Our Customised Cargo Body designs are tailored to your application needs enabling you to maximise your business profits.

Xpert Hai Toh Possible Hai...



Superior Build
& Finish



Warranty &
Service Support



Start earning
from day one



Benefit from
Lower GST



E-Commerce | Parcel & Courier



FMCG | FMCD



Cold Chain



SMART DIGITAL SOLUTIONS

Our Industry 1st Digital Solutions help you manage your operations more efficiently and maximise your business productivity.

*T & C apply. Accessories and features shown may not be a part of the standard equipment.
All specifications and features may not be available in all variants and could vary between different variants.



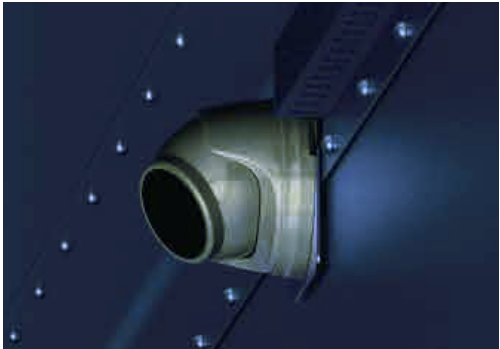
DSMS & Forward Collision Warning
Monitors driver's condition & behavior in real time to increase safety



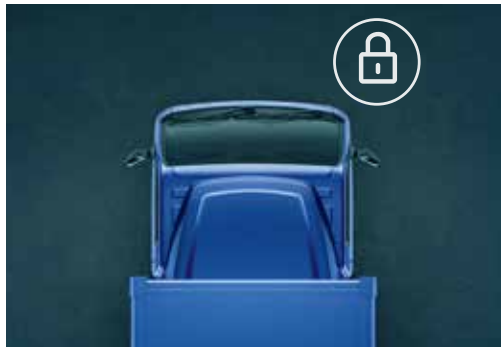
Digital Lock
Enhances cargo safety by granting access only to authorised person to open/lock the cargo body



FOTA Telematics
Allows remote software updates without visiting the workshop



Cargo Space Monitoring
Enables fleet managers to remotely monitor the status of cargo volume



Remote Immobiliser

Fleet operators can prevent unauthorised use of vehicle



Infotainment

Makes information accessible at your fingertips



Reefer Temperature Monitoring

Tracks temperature & humidity for temperature sensitive cargo



Reverse Camera

Assists the driver in parking for improved safety

FLEET MANAGEMENT SOLUTIONS

MY EICHER



FOTA Telematics
for Over The
Air Updates



Fleet Management
with intelligent insights



Uptime Management
with preventive alerts



Service Booking &
Real-Time Repair Tracking



Live Charging Status

DELIVER ON TIME, EVERYTIME.

Our 24X7 Uptime Support provides predictive diagnostic alerts to minimise unplanned breakdowns and workshop visits, along with round-the-clock on-road assistance.

X*pert Hai Toh Possible Hai...*



India's 1st Uptime Centre
for 24x7 Service Support



Predictive Diagnostics
Alerts to prevent
breakdowns



Advanced
Diagnostic Tools



GPS enabled vans
for 24x7 on road
breakdown support

XPERT SOLUTIONS

Comprehensive support solutions to partner with you at every step.



Dealer Network

Our pan India network of digitally enabled dealerships is equipped with highly trained technicians and advanced diagnostic tools.



Exchange

Enjoy a seamless exchange of your used vehicles with the best value, a transparent process, and peace of mind.



Charging

Compatibility with over **14,000 charging points** established by leading charging point operators across India.



Finance

Easy and hassle-free loan and leasing solutions.



PARAMETERS

GVW (kg)	3490
Payload (kg) on FSD	1760/1700
Wheelbase (mm)	2730
Load Body Dimension – FSD (mm)	3340 X 1750 X 475

EV Power Train Details

Battery (kWh)	32/40
Operating Voltage (V)	307/384
Motor	Permanent Magnet Synchronous Motor (PMSM)
Peak Power (kW)	80
Peak Torque (Nm)	300

Performance

Range*	249 kms (40 kWh)/206 kms (32 kWh)
Max. Speed (kmph)	80
Gradeability (%)	30
TCD (m)	10.8

*As per standard ARAI Test Conditions.

Charging Time

Charging Type	Type-2 (AC) & CCS2 (DC)
DC Charging Time (30 kW)*	55 mins (32/40 kWh)
AC Charging Time (7.4 kW)*	3.5 hours (32 kWh)/4.25 hours (40 kWh)
Charging Time (3.3 kW)*	8 hours (32 kWh)/10 hours (40 kWh)

* For SoC 15% to 80%. Charging duration varies depending on different factors.

Others

Seating Capacity	D+2
Ground Clearance (mm)	220
Steering	Electric Power Steering
Tyre – Front & Rear	7R15
Front Suspension	Parabolic
Rear Suspension	Semi Elliptical Leaf
Brakes	Front – Disc I Rear – Drum

Pro X 3.5T EV

PARAMETERS

GVW (kg)	2995
Payload (kg) on FSD	1445
Wheelbase (mm)	2330
Load Body Dimension – FSD (mm)	2909 X 1750 X 475

EV Power Train Details

Battery (kWh)	32
Operating Voltage (V)	307
Motor	Permanent Magnet Synchronous Motor (PMSM)
Peak Power (kW)	80
Peak Torque (Nm)	300

Performance

Range*	220 kms (32 kWh)
Max. Speed (kmph)	80
Gradeability (%)	33
TCD (m)	9.4

*As per standard ARAI Test Conditions.

Charging Time

Charging Type	Type-2 (AC) & CCS2 (DC)
DC Charging Time (30 kW)*	55 mins
AC Charging Time (7.4 kW)*	3.5 hours
AC Charging Time (3.3 kW)*	8 hours

*For SoC 15% to 80%. Charging duration varies depending on different factors.

Others

Seating Capacity	D+2
Ground Clearance (mm)	181
Steering	Electric Power Steering
Tyre – Front & Rear	215/75R15
Front Suspension	Parabolic
Rear Suspension	Semi Elliptical Leaf
Brakes	Front – Disc I Rear – Drum

Pro X 3T EV

AVAILABLE IN THREE COLOURS

DARK BLUE

DAZZLING WHITE

OCEAN BLUE*

*Available only in Eutectic Container.

*Images are for representational purposes only. Accessories and features shown may not be a part of the standard equipment. All specifications and features may not be available in all variants and could vary between different variants. Specifications are subject to change without prior notice. Please consult authorised dealer for the latest information.

FOR 24 x 7 SUPPORT
Eicher CARE 1800 1023

EICHER
Pro X

Xpert Hai Toh Possible Hai



NAYI SOCH NAYE RAASTE